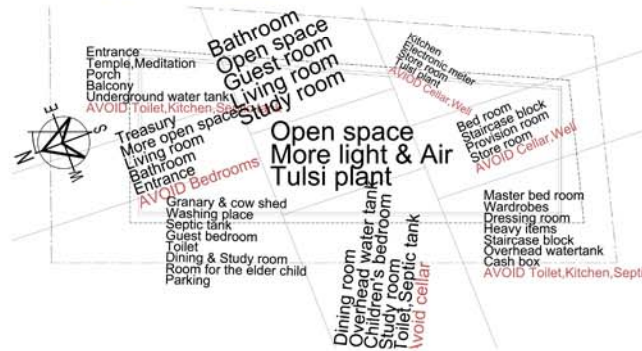


# Modern Vastu Shastra House



The tendency to imbue a project with ones' own bias can be difficult to break. To step out of that comfort zone and design from an unfamiliar perspective, embracing different cultural values and traditions that at times directly contradict our own is uncomfortable. It is also an opportunity to learn and grow. Such was the challenge for the design of a home in Hyderabad, India.

The design is derived from a western interpretation of "Vastu shastra"; a doctrine based on directional alignments born from a traditional view of how the laws of nature affect human dwellings. The world is comprised five basic elements; earth (Bhumi), water (Jal), air (Vayu), fire (Agni) space (Akasha). The balance of these five elements is crucial to the existence of life on earth and the happiness of those who dwell upon it. Initially adherence to this doctrine seemed limit the creative process but it also revealed new ways of approaching old problems such as providing adequate protection from the harsh Indian climate and dealing with the limitations of local craftsmanship and construction methods.

Project Team:



Hui Tian, Principal



Scott Park, Project Architect

ELURI RESIDENCE  
Hyderabad, India  
2013 - Present

Studio19 Architects

